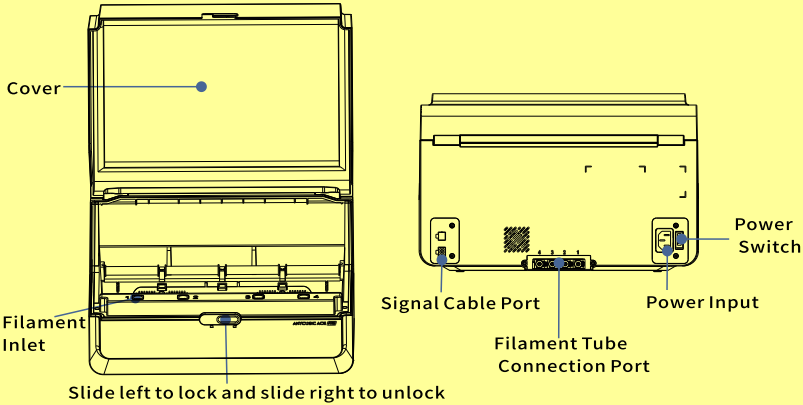


# Anycubic ACE Pro

## User Manual



### 1. Product Overview



### 2. Packing List



Power Cord  
(1pcs)



Signal Cable  
(1pcs)



Filament Tube  
(4pcs)



Purge Wiper



Filament Cutter  
(1pcs)



4-in-1 Filament Hub  
(1pcs)



Cable Organizer  
(2pcs)



M3\*7  
(2pcs)

For more detailed tutorials or usage instructions, please scan the QR code provided to access them.



ANYCUBIC APP



ANYCUBIC Wiki



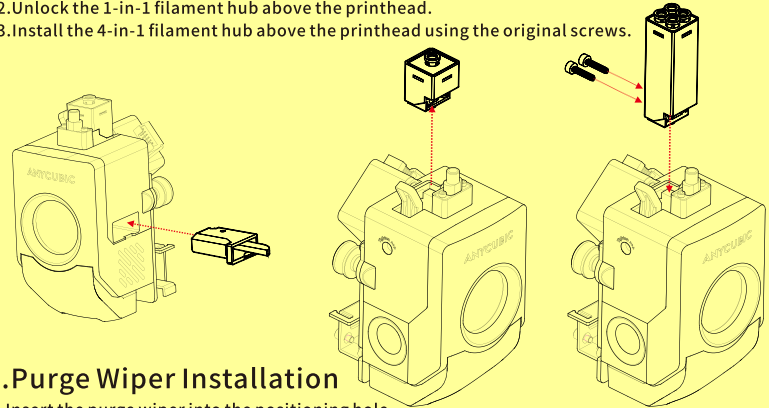
Installation Video



M02010116

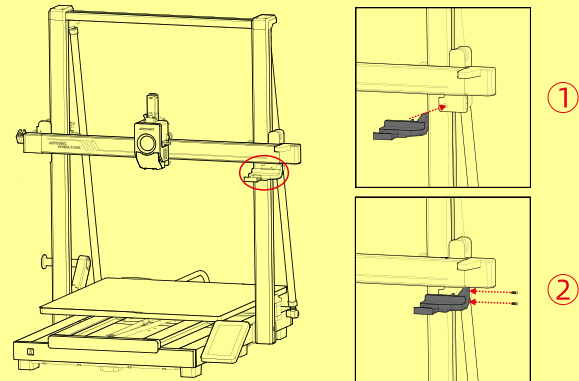
### 3. Filament Cutter and 4-in-1 Filament Hub Installation

1. Install the filament cutter into the slot on the right side of the printhead (Note: remove the decorative cover first).
2. Unlock the 1-in-1 filament hub above the printhead.
3. Install the 4-in-1 filament hub above the printhead using the original screws.



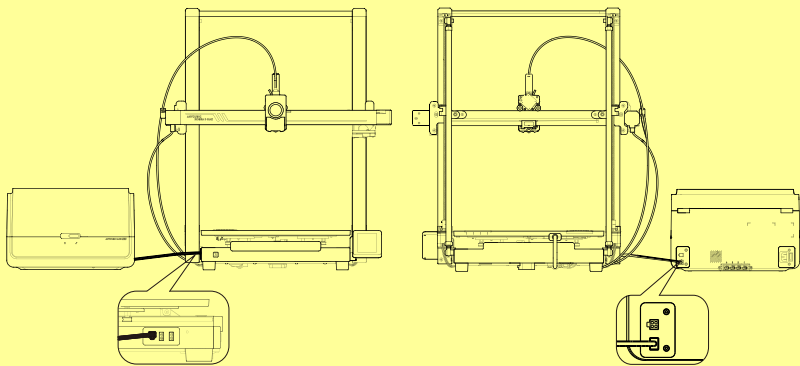
### 4. Purge Wiper Installation

1. Insert the purge wiper into the positioning hole.
2. Secure the purge wiper with the screws provided in the accessory box.

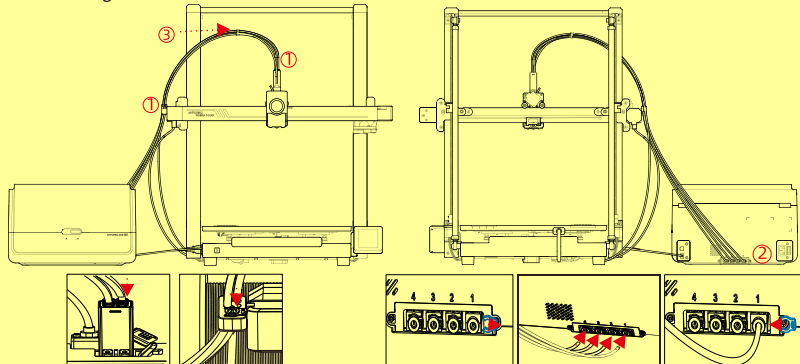


## 5.Signal Cable and Filament Tube Installation

- 1.Put ACE Pro to the left side of the printer, spacing 10-15cm.
- 2.Insert the 4-pin end of signal cable into the left side of the peripherals.
- 3.Insert the 6-pin end of signal cable into the left corner of ACE Pro,  
Note that the cable buckle faces outward.

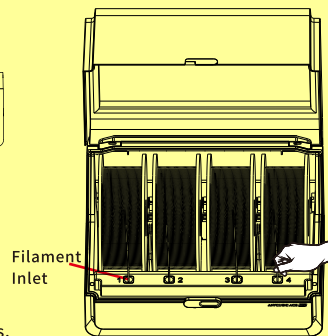


1. Insert one end of the filament tube into the printhead filament hub, and pass the other end through the cable holder on the left side of the printer.
2. First, remove the four blue clips from the connection ports, insert the filament tubes into the ports, then reinstall the four blue clips back into their original positions (Note: filament tubes are matched in no order).
- 3.Use cable organizer to secure the cable.

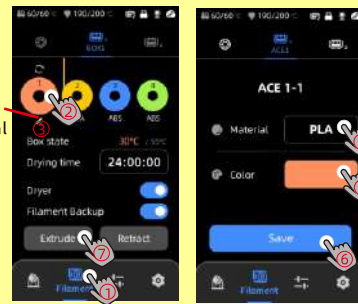


## 6.Loading Filament

1. Place at least one roll of filament in ACE Pro.
2. Insert one end of the filament into the filament inlet, and ACE Pro will automatically pre-load the filament after detecting it.
3. Press the [Filament] interface, click to select a filament, and then edit mark will appear. Select the corresponding material and color and click save, if you use Anycubic RFID filament, the filament color and material will be automatically identified.
4. After completing the above operations, click [Extrude], wait for the nozzle to heat to the preset temperature, and the filament will be extruded from the nozzle.



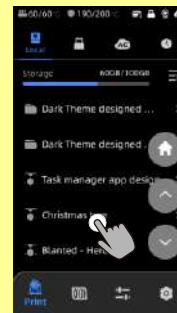
Edit color and material



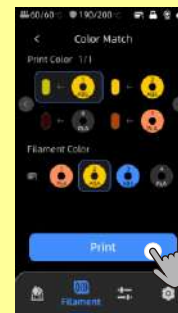
Note: 1. Before inserting the filament into the filament inlet, make sure to straighten the end of the filament.  
2. It is recommended to use plastic filament trays to achieve better printing smoothness.

## 7.First Print

- Select a model from the local or U-DISK and start printing.  
\*We recommend using one of the pre-loaded files as a first test print.



Select the model from local storage or U-DISK.



Select color, press "Print".