

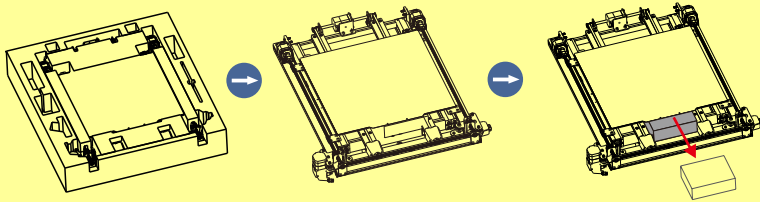
Anycubic Kobra 2 Max

Quick Start Guide

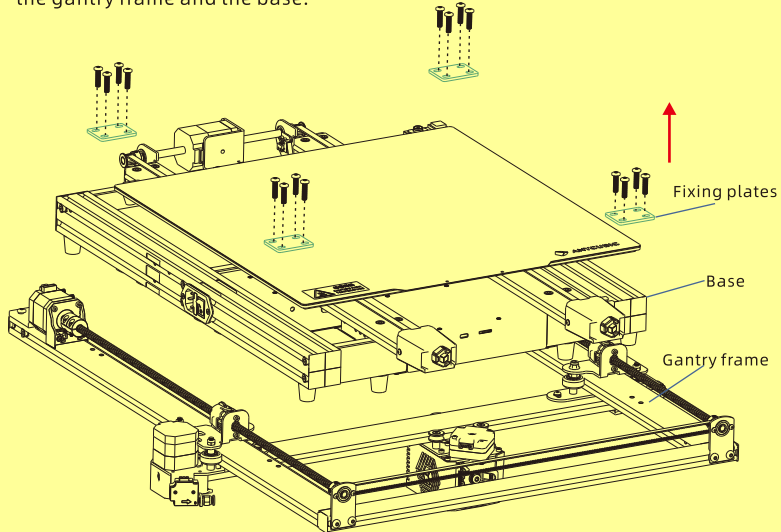


1. Unboxing

Step 1: Remove all the accessories from the foam, then take out the components of the gantry frame and base, and remove the foam located at the bottom of the platform.

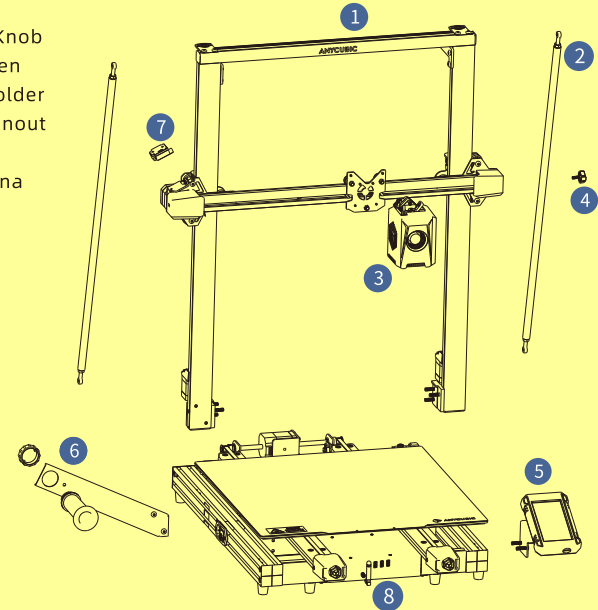


Step 2: Remove the 4 fixing plates shown in the diagram, and then separate the gantry frame and the base.



2. Machine Installation

- 1) Install gantry frame
- 2) Install support rod
- 3) Install print head
- 4) Install tensioner Knob
- 5) Install Touch screen
- 6) Install filament holder
- 7) Install filament runout sensor
- 8) Install WIFI Antenna



For more detailed tutorials or usage instructions, please scan the QR code provided to access them.



ANYCUBIC APP

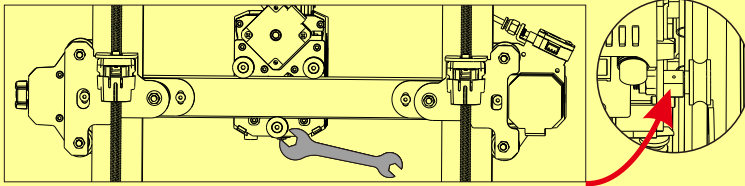


Help center

3. Check Before Use

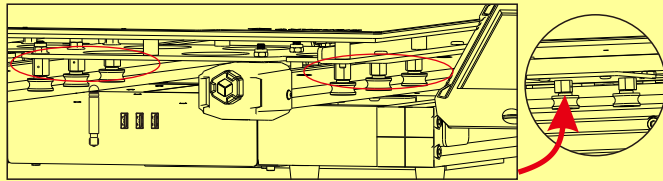
1) Pulley elastic adjustment

Check if the print head is shaking. If it is, adjust the hexagonal isolation column located underneath the print head until it slides smoothly and without shaking.



Print head

Check if the print bed is shaking. If it is, adjust the hexagonal isolation column located underneath the print bed until it slides smoothly and without shaking.

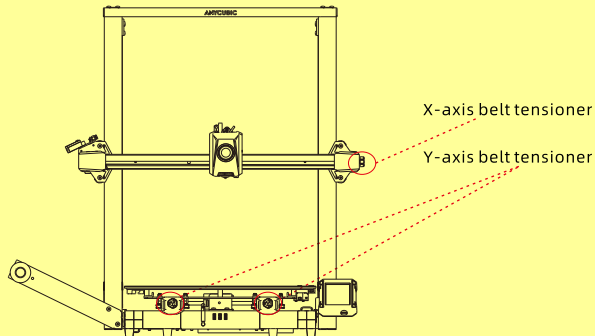


Platform

Similarly, the pulleys on both sides of the gantry frame can also be adjusted. ⚠️

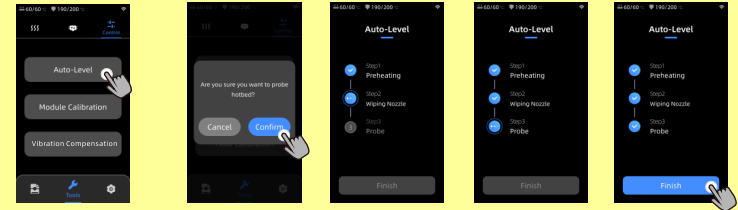
2) Belts

Please manually move the print head and print platform. If there is any difficulty or abnormal noise during the movement, adjust the tensioner to ensure smooth sliding of the print head or platform.



4. Leveling

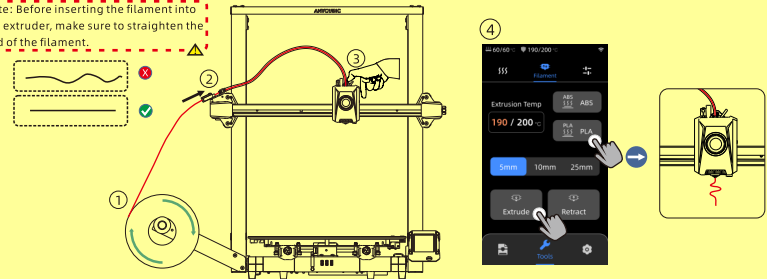
Press "Tools" - "Control" - "Auto Level". Wait for the machine to complete the leveling process.



5. Loading Filament

1. Put the filament onto the spool holder.
2. Insert the filament into the extruder until you feel some resistance. While doing so, press and hold the button on top of the extruder.
3. Press "Tools" - "Filament" - "PLA/ABS". Wait for the nozzle to heat up to the preset temperature. Press "Extrude" and wait for the filament material to be extruded from the nozzle. After stopping the filament feed, please clean the nozzle.

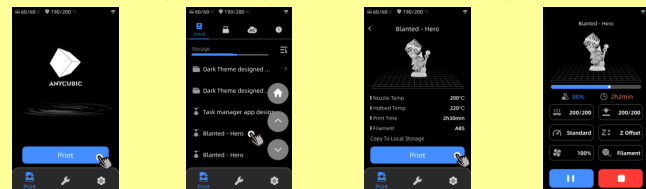
Note: Before inserting the filament into the extruder, make sure to straighten the end of the filament.



6. First print

Select a model from the local or U-DISK and start printing.

*We recommend using one of the pre-loaded files as a first test print.



M02030333